



Boom Lift

[Home](#) / [Boom Lift](#)

Boom Lift



Boom Lift

An **electric boom lift** is a type of aerial work platform that is used to provide temporary access to elevated areas. It is powered by electricity rather than traditional fuel, making it more environmentally friendly and quieter than gas-powered or diesel lifts.

A boom lift consists of a hydraulic arm (or "boom") that can extend and rotate, allowing operators to reach high places, such as tall buildings or structures, while maintaining stability. The electric boom



lift is typically used in indoor environments or places where low emissions and quieter operations are important, such as warehouses, construction sites, and maintenance tasks.

Key features of an electric boom lift:

1. **Electric Power:** Operates using batteries, making it ideal for indoor use where noise and emissions need to be minimized.
2. **Maneuverability:** The boom lift can extend vertically and horizontally, allowing operators to access difficult-to-reach areas.
3. **Stability and Safety:** Designed with a stable base and safety features like guardrails, emergency stop buttons, and tilt sensors.
4. **Zero Emissions:** As it's powered by electricity, it doesn't produce harmful emissions, making it a cleaner option for work environments.

Overall, an electric boom lift is a versatile, eco-friendly solution for working at heights with ease and safety.

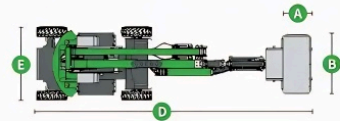
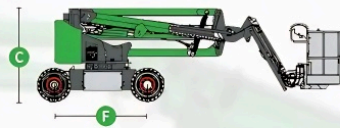


技术参数 (Technical parameters)

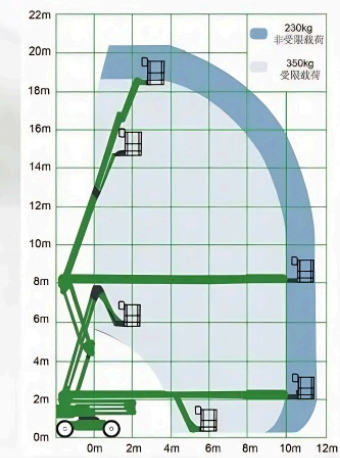


型号 Model	V18
规格 Specifications	
最大工作高度 Max. Working Height	20.2m
最大平台高度 Max. Platform Height	18.2m
最大跨越高度 Max. Up and Over Clearance	8.0m
最大作业半径 Max. Working Radius	11.1m
A 平台宽度 Platform Width	0.76m
B 平台长度 Platform Length	1.8m
C 整机高度-收藏 Height – Stowed	2.38m
D 整机长度-收藏 Length – Stowed	8.49m
E 整机宽度 Width	2.49m
F 轴距 Wheelbase	2.5m
离地间隙 (中心) Ground Clearance - Center	0.3m
标准集装箱运输 Standard container transportation	
性能 Productivity	
最大承载能力 Max. Lift Capacity	230kg(非受限)/350kg(受限)
平台承载人数 Platform Occupancy	2/3
平台旋转 Platform Rotation	±80°
转台旋转 Turntable Rotation	360°连续
飞臂变幅范围 Vertical jib Rotation (up/down)	±70°
行驶速度-收藏 Drive Speed – Stowed	4.8km/h
爬坡能力-收藏 Gradeability – Stowed	45%
工作时最大允许角度 Max. Working Angle	3°
转向半径-外侧 Turning Radius (outside)	5.0m
驱动转向形式 Drive and Steer	4×2
重量 Weight	9100kg
轮胎 Tire	33×12-20
动力 Power	
电池 Battery	48V/420Ah
控制电压 Control Voltage	24V
泵电机功率 Pump Power	12kw
行走电机功率 Drive Motor	3.3kw
充电器 Charger	48V/60A
液压油箱 Hydraulic Tank	105L
应急动力系统 Emergency Power System	12V电动
选配 Optional	
锂电池 LFP Battery	可选
实心无痕轮胎 Solid Non-marking Tires	可选

18米电动曲臂高空作业平台
18m Electric Articulating Boom Lifts



18米电动曲臂工作范围
Working Range of 18m Electric Articulated Boom Lift

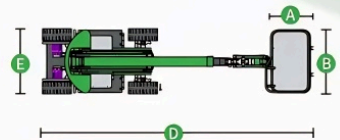
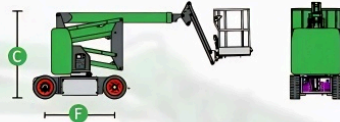


技术参数 (Technical parameters)

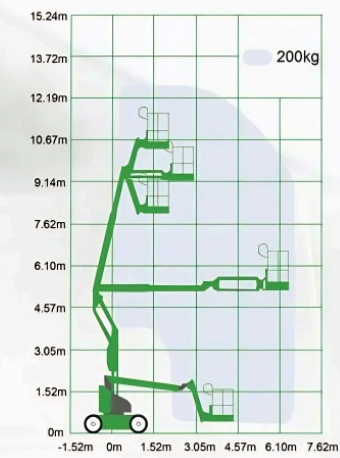


型号 Model	V11
规格 Specifications	
最大工作高度 Max. Working Height	12.52m
最大平台高度 Max. Platform Height	10.52m
最大跨越高度 Max. Up and Over Clearance	4.65m
最大作业半径 Max. Working Radius	6.5m
A 平台宽度 Platform Width	0.7m
B 平台长度 Platform Length	1.4m
C 整机高度-收藏 Height – Stowed	2.0m
D 整机长度-收藏 Length – Stowed	5.6m
E 整机宽度 Width	1.50m
F 轴距 Wheelbase	1.95m
离地间隙 (中心) Ground Clearance - Center	0.14m
标准集装箱运输 Standard container transportation	
性能 Productivity	
最大承载能力 Max. Lift Capacity	200kg
平台承载人数 Platform Occupancy	2
平台旋转 Platform Rotation	±80°
转台旋转 Turntable Rotation	355°
飞臂变幅范围 Vertical jib Rotation (up/down)	±70°
行驶速度-收藏 Drive Speed – Stowed	4.8km/h
爬坡能力-收藏 Gradeability – Stowed	35%
工作时最大允许角度 Max. Working Angle	3°
转向半径-外侧 Turning Radius (outside)	4.08m
驱动转向形式 Drive and Steer	2×2
重量 Weight	5200kg
轮胎 Tire	22×7×17
动力 Power	
电池 Battery	48V/320Ah
控制电压 Control Voltage	24V
泵电机功率 Pump Power	4kw
行走电机功率 Drive Motor	3.3kw
充电器 Charger	48V/35A
液压油箱 Hydraulic Tank	20L
应急动力系统 Emergency Power System	24V电动
选配 Optional	
锂电池 LFP Battery	可选
实心无痕轮胎 Solid Non-marking Tires	可选

11米电动曲臂高空作业平台
11m Electric Articulating Boom Lifts



11米电动曲臂工作范围
Working Range of 11m Electric Articulated Boom Lift



Easy Group Industrial Building Materials and High-Performance Height Access Solutions.

✉ sales@easygroup.ae, harrisonyang@126.com

☎ [+971-50-8795278](tel:+971508795278)
[+971-50-3845683](tel:+971503845683)

Links

- [Home](#)
- [About Us](#)
- [Products](#)
- [Contact](#)
- [Gallery](#)

Our Products

- [Aluminium Mobile Scaffolding](#)
- [Mini Mobile Steel Scaffoldings](#)
- [Aluminium Ladders](#)
- [Loft Ladder](#)
- [Alum Work Platform Lift](#)
- [Manual Lift or Duct lifter](#)
- [Electric Scissor Lift](#)
- [Platform Lift](#)
- [Storage Shelf Rack](#)
- [Cradle Hoist System](#)
- [Aluminium Truss system](#)
- [Caster Wheels](#)
- [Elevator, Escalator & Lift](#)